

cubenest

User manual

Cubenest Hair Dryer SwiftDry SDHD01



Package contents:

- SwiftDry SDHD01 hair dryer
- Magnetic attachment (concentrator)

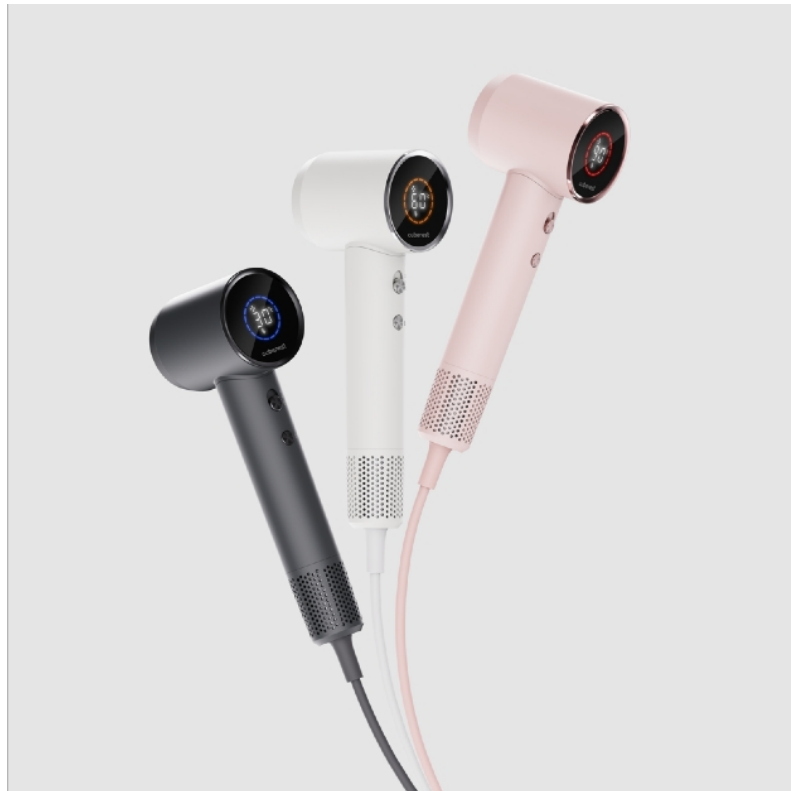
1. Description of the device

Cubenest SwiftDry is a powerful, lightweight and quiet hair dryer with a powerful motor (up to 110,000 rpm) that dries hair up to 2x faster than conventional hair dryers. Thanks to ionization technology with 200 million negative ion output, it ensures smoother and healthier looking hair without frizz. It offers 4 temperature modes, 2 speeds and an LED display. Ergonomic design, light weight and removable filter ensure convenient use and easy maintenance.

Product Specifications:



- **Model.**
- **Protection:** surge, short circuit, thermal, current
- **Power:** 1600 W
- **Voltage:** 220-240 V, 50/60 Hz
- **Motor speed:** 110,000 RPM
- **Air velocity:** 80 km/h
- **Main materials:** polycarbonate
- **Product weight:** 503 grams (including power cord)
- **Noise level:** ≤ 59 dB



2. Instructions for use

Switching the hairdryer on and off

1. Plug the hairdryer into an electrical socket.



2. Slide the top button upwards to switch on the hairdryer. When you switch it on, the LED display will light up with the current blowing temperature.



3. Slide the button all the way up for a higher speed.



Changing the temperature

- Press the bottom button again to switch between 90°C, 60°C and 30°C.



Cleaning and maintenance of the filter

- Hold the handle and gently pull the filter cover downwards from its position.



We recommend that you regularly clean and maintain the filter cover and filter mesh to prevent damage and maintain optimum performance.

- Clean the filter cover and filter mesh with a dry cloth or soft brush.
- ⚠ Do not wash with water or any other liquid.
- ⚠ Do not put too much pressure on the filter mesh.

After cleaning, snap the filter cover back into place until you hear a click.

Putting the concentrator on

- With the magnets, simply attach the concentrator to the nozzle and it will magnetically snap on.



Hair styling

1. Use the magnetic attachment to attach the styling concentrator to the nozzle.
2. Hold the hairdryer at a distance of 10-15 cm from the hair.
3. Point the concentrator nozzle in the direction you want the hair to fall.
4. For example, to create smooth and straight hair, point the nozzle down the length of the hair.

3. Safety instructions and warnings

The hair dryer and accessories contain magnets. Keep them out of reach of people with implanted medical devices (e.g. pacemakers, defibrillators) as magnetic fields can affect their function.

⚠ Do not use the hair dryer near bathtubs, showers, swimming pools or other containers containing water.

⚠ Do not clean the hair dryer with water or other liquids.

⚠ Do not use the hair dryer if it has been immersed in water.

⚠ Do not allow children to use the hair dryer without adult supervision.

⚠ Do not repair, disassemble or replace any parts yourself.

⚠ **Do not use** the appliance if the power cord or plug is damaged.

⚠ **Do not touch** the plug with wet hands.

⚠ **Do not use** the hair dryer near flammable or explosive materials. ⚠ **Do not use** the device in an environment with high humidity or temperature. ⚠

Do not wrap the power cord around the hair dryer.

⚠ **Do not use** any detergents, lubricants, air fresheners or polishes on the hair dryer or its accessories.

⚠ **Do not block** the air supply - overheating and fire may result.

The hair dryer is equipped with an overheating protection - it will automatically switch off in case of overheating. After use or before cleaning, **unplug** the unit from the power outlet.

The air outlet and accessories may be hot during operation - **do not touch them** until they have cooled down.

When using the dryer in the bathroom, **always unplug it after** use. Installation is recommended a residual **current device (RCD/GFCI)** with a residual current not exceeding 30 mA.

4. Frequently Asked Questions (FAQ)

How will ionization technology protect my hair?

The hairdryer uses Swift+ ionisation, which releases up to **200 million negative ions/cm³**. These help to **hydrate hair**, seal hair cuticles and prevent frizz and breakage - resulting in smooth, shiny hair.

Is it true that a hair dryer really does dry faster?

Yes, thanks to the powerful 1600 W motor with up to **110,000 rpm**, the hair dryer can dry up to **2x faster** than conventional models.

How noisy is the dryer during operation?

The noise level is around **≤ 59 dB**, ensuring quiet operation - comfortable even in busier environments or early in the morning.

How does intelligent temperature control work?

The hairdryer is equipped with the **NTC intelligent temperature control** system, which automatically adjusts the temperature according to the distance to the hair and the resistance of the airflow, increasing safety and protecting the hair.

Are the attachments really magnetic?

Yes, all accessories (e.g. concentrator) use a magnetic attachment that ensures easy replacement and secure attachment of the attachments.

How do I clean the filter?

The hairdryer has a **removable magnetic dust filter** that is easy to remove and clean - just dust it regularly for optimum performance and longevity.

Which hair types is the hair dryer suitable for?

With **3 temperature modes**, **2 speed settings** and a cold air function providing up to **8 combinations**, it is suitable for a variety of hair types - fine, thick and for styling children and adults.

What is the cord length and weight of the hair dryer?

The hairdryer weighs **503 g** and is equipped with an ergonomic body and a **2 m long cable**.

5. Troubleshooting the most common problems

The hairdryer won't switch on

Cause: no power supply, faulty socket or cable.

Solution: check that the hairdryer is plugged into a working socket and that the cord is undamaged. If the plug or cord is damaged, do not use the appliance.

Poor performance or low airflow

Cause: clogged or blocked air intake filter.

Solution: unplug the hairdryer, open and carefully remove the magnetic filter. Clean it of dust or hair with a soft brush. Then put the filter back in place. Repeat the cleaning process regularly.

The hairdryer switches itself off after a while (overheating)

Cause: motor overheating or clogged air inlet.

Solution: switch off the hairdryer immediately and disconnect it. Wait for it to cool down. Check and clean the filter. Always unplug the dryer after use or before cleaning.

Unusual noises (buzzing, clicking, high-pitched)

Cause: loose internal part, foreign object or motor problem.

Solution: allow to cool down and clean the filter. Do not attempt to repair the device yourself.

Temperature settings are difficult to adjust

Cause: dirty or faulty thermostat/control system.

Solution: turn off and unplug the hair dryer for a minute and plug it back in - some models are technically reset this way.

Attachments are not firmly locked / falling out

Cause: the magnetic attachment may be incorrectly fitted or dirty.

Solution: check that the attachment is properly aligned and attached. If it repeatedly comes loose, clean the magnetic contacts. Magnetic grips increase safety and convenience when changing attachments.

Technical support

 **E-mail:** info@cubenest.eu

Warranty and Complaints

- This product is covered by a 24-month warranty.
- In case of a defect, please fill in our [complaint form](#).